

If you, or your family, have any questions
Please contact:

Julie Burton or Jo Oliver

Tel: (01935) 384367
Monday – Friday 9.00am – 4.00pm
(answer machine out of hours)

Email: colorectalnurses@ydh.nhs.uk

Colorectal and Stoma Care Department
Level 4
Yeovil District Hospital
Higher Kingston
Yeovil
Somerset
BA21 4AT

If you would like this leaflet in another format or in a different language, please contact the hospital's communications department on 01935 384233 or email Communications@ydh.nhs.uk

Leaflet no: 03-14-102
Date: 01/15 Review by: 01/17



Information Summary



Department of Surgery

www.yeovilhospital.nhs.uk

This leaflet summarises information you have been given and provides further information you may find useful. It is for your personal use and you may find it helpful when you discuss your results with your family and/or GP.

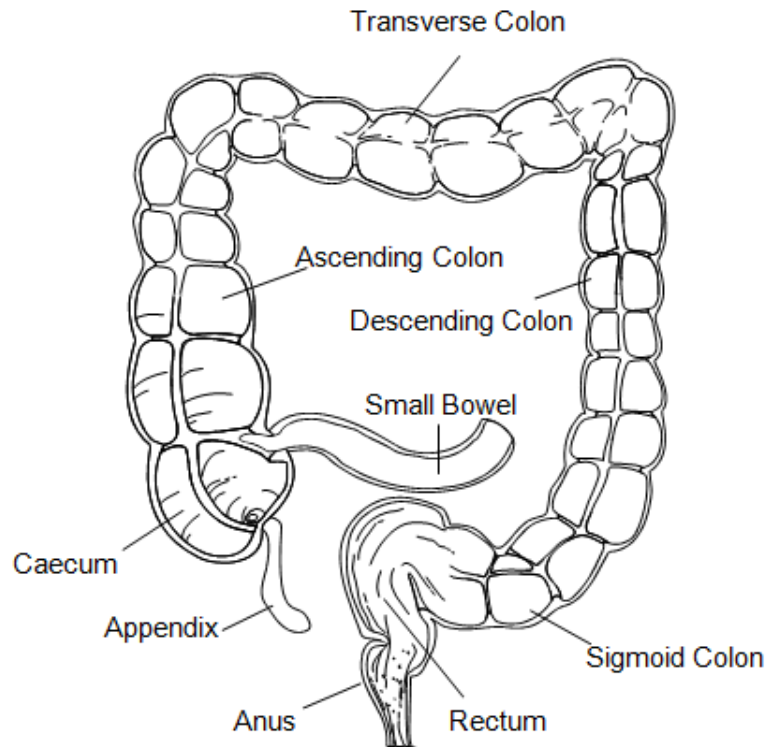
You have been seen in clinic by:

.....

Your keyworker is:

.....

The results of your tests show:



The next step is:

Chances of stoma formation:

Additional information:

Copy of GP letter required?

YES / NO